

2270 Industriel, Montreal (Laval) Canada H7S 1P9 / Tél.: (514) 667-9769 Fax: (514) 667-6320



# **INSTRUCTION MANUAL**

**FOR ALL INQUIRIES  
PLEASE CONTACT  
OUR LOCAL DISTRIBUTOR**

<p><b>FOR U.S. (ONLY) 1-800-333-6556</b></p>
--

Thank you for choosing ORION stretch-wrapping equipment. It is a wise choice which will benefit your company now and in the future.

ORION uses a unique combination of functional, rugged steel structure and sophisticated control systems to offer equipment high in durability and low in maintenance requirements. Our advanced control systems mean that ORION equipment can be operated safely and efficiently without the need for special operator expertise.

Please read this manual carefully and keep it handy. Following these simple operating instructions will insure the safe and efficient performance of this machine while simple maintenance procedures will guarantee a long and productive life of the equipment.

**NOTICE:**

**Our manual covers standard features of the machine. Certain options may not be fully covered due to their unique application.**

In order to acquire more information about custom made features of your machine and to provide quicker service, the following information is required when making an inquiry:

8 0 5 8 5 2 1

8 0 5 8 5 2 2

8 0 5 8 5 2 3

- 1) **MODEL**
- 2) **SERIAL NUMBER**
- 3) **SUBASSEMBLY ( see PART LIST )**

*H/L78-12*

*Dwg. # 301 267*

**SAFETY:**

ORION'S stretch wrappers should be operated with caution and common sense as any other industrial equipment. To prevent injury and / or electrical shock, careful operation of the machine and awareness of its many automatic functions is required.

Note: All electrical power and compressed air must be disconnected prior to performing any inspection, maintenance or repair work.

**ORION PACKAGING INC.**

## **Semi-Automatic Machines Version –12. Specifications**

(Revised: June 10, 1997)

### **ORION "EPIC" SERIES MODEL H-78**

#### **Spiral Semi-Automatic Medium Duty High Profile with Econo-Stretch**

<b>Maximum Load Size</b>	50"W x 50"L x 82"H
<b>Weight Capacity</b>	3,500 lbs. Dynamic, 7,000 lbs. Static
<b>Utilities</b>	115/1/60 15 Amp Service
<b>Turntable</b>	48"x48" Formed & Welded Octagonal Turntable w/ Skirt Structural Steel Plate 3 Point Floating Caster Support Design
<b>Turntable Drive</b>	0-12 RPM Variable Turntable Speed DC Variable Speed Drive Motor Heavy Duty Friction Drive Positive Alignment Feature
<b>Control Features</b>	CSA Approved, NEMA 12 Control Panel User Friendly Controls with Non-Proprietary Pushbuttons, and Switches Brake Force Adjustment on the Panel Separate Top and Bottom Wrap Count Selectors Variable Speed Film Carriage Up/Down Control Film Carriage Raise/Lower Switch (Manual) Turntable Jog Pushbutton
<b>Film Delivery</b>	20" Orion Econo-Stretch Film/Netting Carriage Electric Brake Tension Control 16" Film/Netting Roll Capacity
<b>Film Carriage Elevator Drive</b>	Heavy Duty ANSI Chain Carriage Lift DC Variable Speed Drive Motor Structural "H" Beam Guidance Ultra-High Molecular Weight Carriage Guidance System
<b>Structural Features</b>	100% Structural Steel Construction Throughout Non-Proprietary, Locally Obtainable Components Throughout Easy Access to All Components Open Mechanical Design for Ease of Maintenance Forklift Portable Base Design Structural Steel "H" Beam Mast
<b>Estimated Shipping Weight</b>	1,050 lbs.

## **MACHINE UNLOADING INSPECTION & INSTALLATION**

### **UNLOADING**

Machine can be easily unloaded and transported by a forklift with a minimum capacity of 2500 lbs.

1. Carefully insert the forks into the lifting tubes to the maximum possible depth. Depending on the model, a forklift access may be either at the turntable end of the machine frame, the tower end or both. In case of the mongoose machine or the conveyor, enter the forks under the frame.
2. Lift the machine (or other part of system) only to the necessary height to move it with no bouncing or friction on the floor.
  - 2a. On the mongoose machines use the brackets welded on the top part of the machine.
3. Sit the machine down assuring uniform contact with the floor which is necessary to ensure correct and smooth operation.
  - 3a. Mongoose type machines (M66, M67) have to be attached on the bracket or on the stand (collapsible or anchored to the floor). The M55 has it's own supporting frame which allows the machine to stand independently.

### **INSPECTION**

1. Remove all packing and supporting additions - these may include the blocks under the carriage and the restraining bar over the table.

NOTE: when removing the stretchwrap film covering the machine, care must be taken not to cut any of the electrical wires and rubber covering on the multistretch rollers.

2. Perform a visual inspection of the electrical and mechanical parts for loosened joints and / or broken connections. Any suspected shipping damage must be reported immediately to the freight carrier.

Items that are vulnerable to damage and must be inspected are as follows:

- motors and transmissions
- junction boxes
- electrical conduits
- proximity and limit switches
- photocells

3. Check under the turntable (H - series models only) to ensure that there is no crippling of the movable parts i.e. casters, center axle or drive assembly.

4. Verify the following:

- turntable or rotary arm drive system to confirm that the reducer to drive the chain is snug and properly aligned
- verify the wires tight conduits for crushed sections or loose fittings
- verify the carriage to be sure that it is correctly aligned with the tower and verify the tension on the lift chain
- verify all the dials and knobs on the control panel for smooth action.

## **MACHINE INSTALLATION**

After the visual inspection has been completed the electrical power and the compressed air may be connected as specified on the diagrams supplied with the machine.

An electrical diagram is provided with each machine in the envelope attached to the panel box.

## **ASSEMBLY PROCEDURE**

The structural frames of the machine have to be installed on a levelled floor. Locate the main wrapper section into its final position, keeping the tower assembly\* away from any traffic.

The wrapper mainframe section must be bolted to the floor by the 1/2" concrete floor anchors (leg & shield or expandable type).

Conveyor sections (where applicable) have to be positioned, levelled\*\* and bolted to the floor. Any wiring which has been disconnected to facilitate transport is marked with a number located on the junction box to which the wiring must be reconnected. It allows identification of the proper position of the infeed and outfeed conveyor sections. Any wire run that appears too short or long may indicate that the position of the mechanical components is incorrect. Verify the status of all assemblies before proceeding.

**CAUTION:** improper placement and alignment of the conveyor section(s) and/or electric photocells may lead to equipment malfunction and damage.

\* The tower deviation from vertical must not exceed 1/4" on the distance of 10 feet (angle: 0 degrees 6').

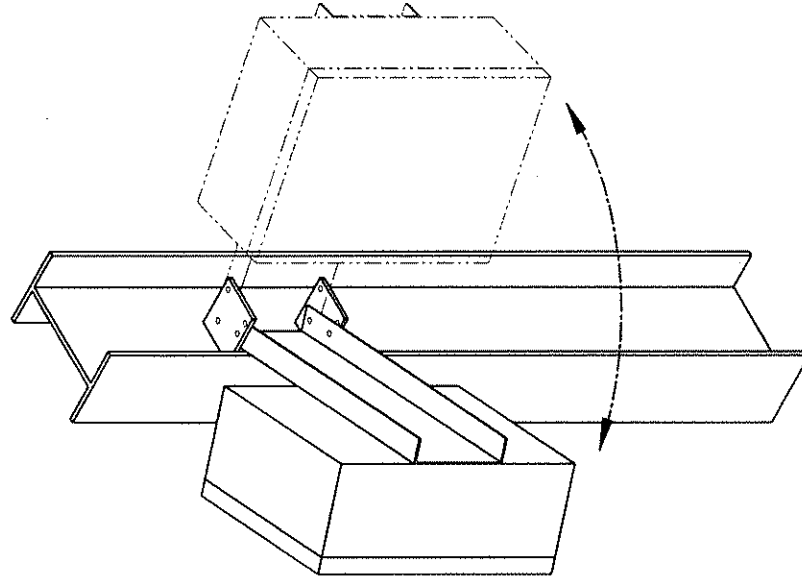
\*\* In the case of the conveyors, the roller deviation from the horizontal must not exceed 1/16 "on the distance 52" (angle: 0 degrees 4').



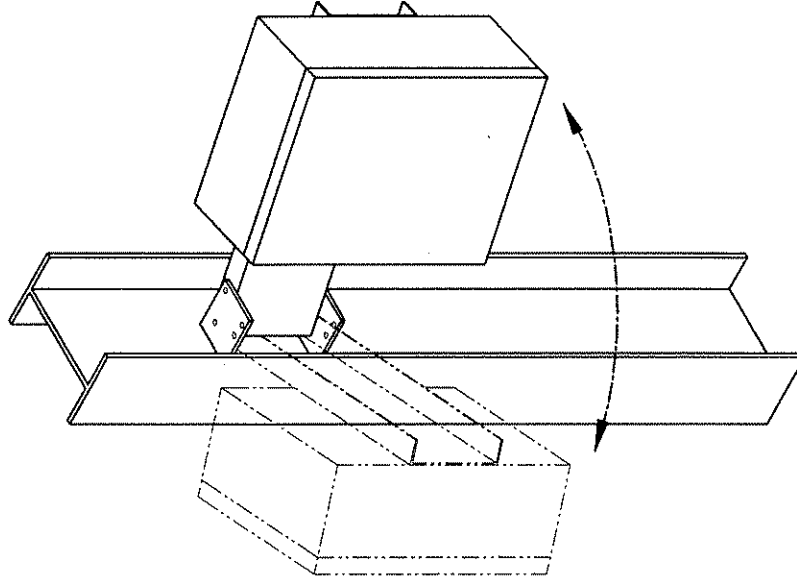
## **CONTROL PANEL**

In the case of the free standing panel (console) place it adjacent to the system and anchor firmly to the floor. Connect the liquid tide (rigid conduit) to the main junction box located on the wrapper main frame next to the tower (or tower home position in case of mongoose). The wires must be matched properly on both sides.

**In order to facilitate acces and manipulation, the control panel can be mounted in two positions:**



**Position 1**

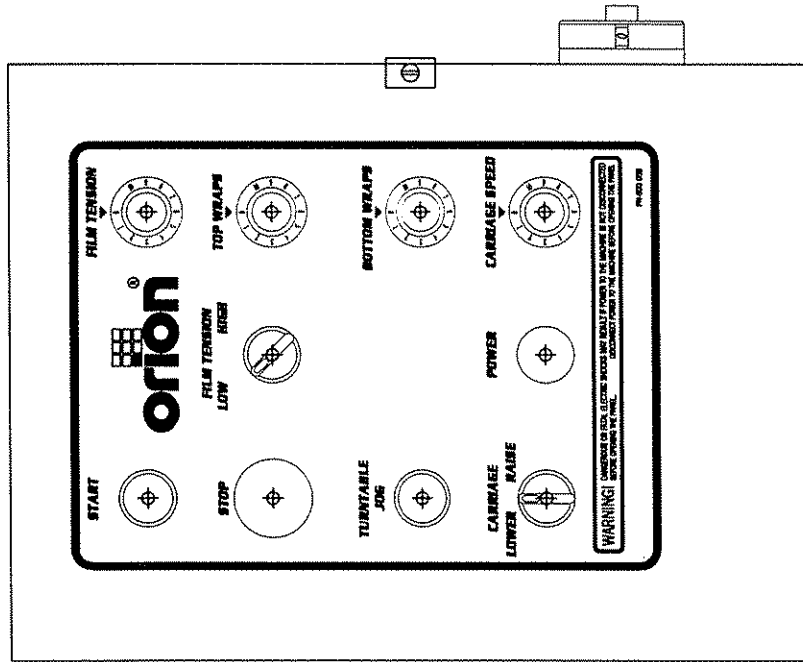


**Position 2**

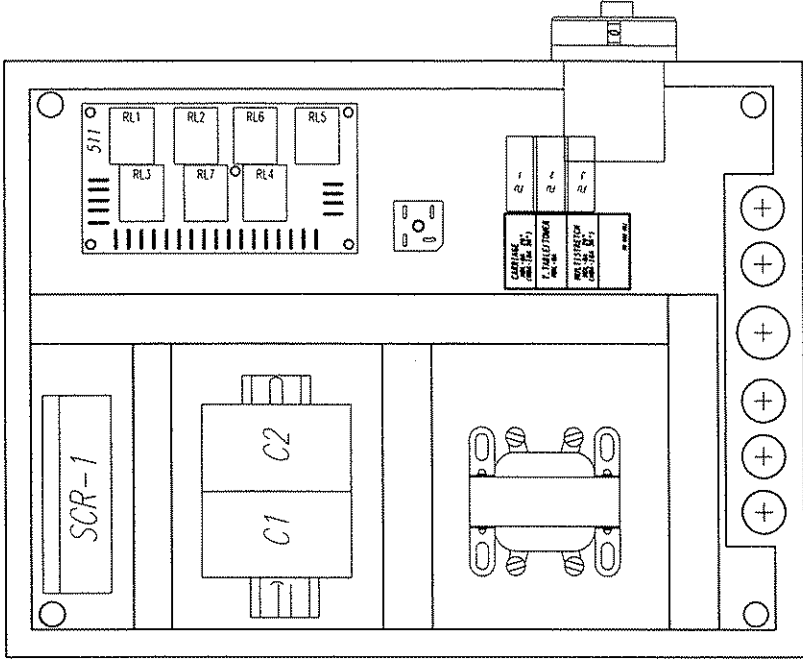
## **CONTROL PANEL MOUNT TWO POSITIONS**

UPDATED JAN-05-98

# 418390



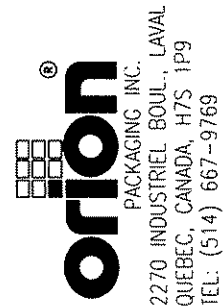
HL78-12 PANEL LAYOUT  
PANEL STICKER PN-500 058  
(5412 ESCH161206)



H/L78-12  
PANEL SIZE 16X12X06

NOTES:

- 1: SCR-2 (168-A) IS LOCATED ON ENCLOSURE DOOR
- 2: FU-2 & FU-3  
MDL-8A (20" CARRIAGE)  
MDL-10A (30" CARRIAGE OR HEAVY FILM GAUGE UPGRADE)



ORION PACKAGING INC.

2270 INDUSTRIEL BLVD LAVAL, QUE., CANADA H7S 1P9  
TEL: (514) 667-9769 FAX: (514) 667-6320  
APPR. BY: J.B.S. DRAWN BY: J. ALEXANDER

SCALE: 1:4

TITLE: H78-12 (STD)

SIZE: A

DOCUMENT NO: 301 267/1

REV:

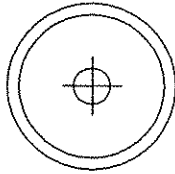
DATE: JAN-21-1998

SHEET: 1 OF 1

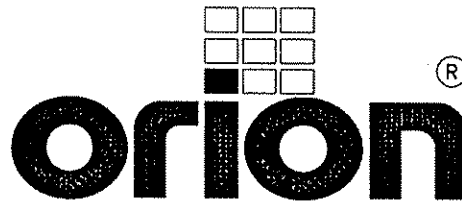
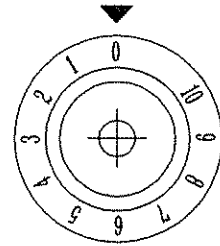
FILENAME: H78-12.DWG

BASE:

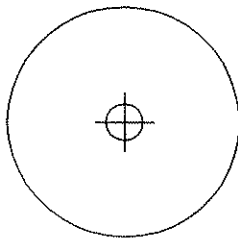
**START**



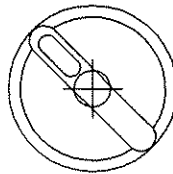
**FILM TENSION**



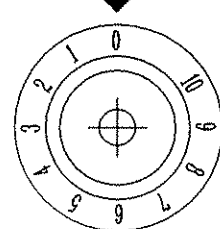
**STOP**



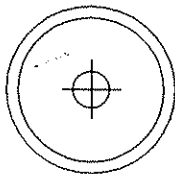
**FILM TENSION  
LOW HIGH**



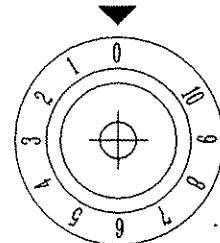
**TOP WRAPS**



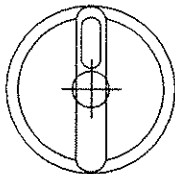
**TURNTABLE  
JOG**



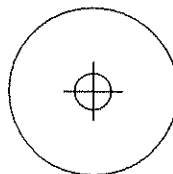
**BOTTOM WRAPS**



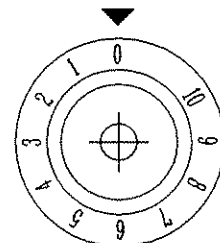
**CARRIAGE  
LOWER RAISE**



**POWER**



**CARRIAGE SPEED**



**WARNING!** DANGEROUS OR FATAL ELECTRIC SHOCKS MAY RESULT IF POWER TO THE MACHINE IS NOT DISCONNECTED BEFORE OPENING THE PANEL. DISCONNECT POWER TO THE MACHINE BEFORE OPENING THE PANEL.

PN-500 058

## **CYCLE CONTROLS**

The control panel layout is custom designed for each particular installation, however, common standard controls have been employed.

**CAUTION:** before proceeding be familiar with the EMERGENCY button and all functions, switches and pushbuttons.

## **POWER SWITCH**

The Power Switch has two settings:

**ON** - connects a power source to the machine (voltage depends on the machine type - see electrical diagram provided with the machine).

**OFF** - disconnects the power source.

## **START AND STOP SWITCHES (EMERGENCY STOP)**

The START switch is used to start the cycle once the load is on the turntable (or under the rotary arm). The cycle may be stopped at anytime by pressing the STOP button.

**NOTICE:** In case of emergency, use the STOP button which interrupts all the machine electrical circuits (except multistretch drive). If the STOP pushbutton is pressed in the middle of the cycle, the carriage and turntable may be returned to their home position by using the jog buttons before restarting the cycle.

## **SPIRAL WRAP SWITCH**

The SPIRAL WRAP switch has two positions:

**UP** - in this position the cycle will end after completing the specified number of top wraps, therefore, the machine will only wrap the load once, going up.

UP/DOWN - in this position the cycle will be completed after the load is wrapped in both the up and down directions.

NOTE: TOP WRAP FIRST (OPTIONAL)

The carriage raises faster at the beginning of the cycle to wrap the top of the load (see electrical diagram provided with the machine).

## **CARRIAGE CONTROL SWITCH**

The CARRIAGE CONTROL switch is a three position switch with the following settings:

RAISE - raises the carriage until the top limit switch on the tower is activated.

LOWER - lowers the carriage until the bottom limit switch on the tower is attained.

The switch is normally positioned in the middle where the carriage remains stationary. Turning the switch to the RAISE or LOWER will activate the carriage to move in its respective direction.

## **TURNTABLE ( ROTARY TOWER ) JOG**

The turntable (rotary tower) jog switch is a pushbutton which will rotate the turntable (rotary arm) in a clockwise direction (as viewed from the top) when the switch is held depressed. When the switch is released the turntable (rotary tower) will stop. The switch is inoperative during the wrap cycle.

## **PHOTOCELL SWITCH**

The photocell switch has two settings:

ON - when turned ON, the photocell instructs the carriage to stop and begin the top wraps sequence once the top of the load is reached. The carriage will always stop at the top of the load regardless of its height. The photoswitch position on the track can be adjusted in order to make the carriage pass the top of the load and overlap the top.

OFF - when turned OFF, the photocell is inoperative and the carriage will stop when the top limit switch has been activated.

## **FILM TENSION**

Film tension may be adjusted using the film tension control knob. It has a range of tension from 0 to 10 (0 to 4 the low range, 4 to 8 the most usefull range for most of the films used by our customers, 8 to 10 as a very high range which may break some films).

NOTE: Lighter loads may require lower tension settings then heavier loads.

Film tension is controlled through the dancer bar system. Occasionally the feed back proximity sensor may need some adjustment. Adjustment of feed back is shown on drawing # 001

Adjustment instructions:

- remove the carriage cover
- unbolt the two nuts holding the proximity switch -item # 1
- turn the proximity switch - item # 2 until the moment when the motor starts to turn (or hums)
- tighten on the nuts securing the proximity switch.

NOTE: The condition in which the motor hums but does not turn must be maintained even after all elements are tightened. If not, the adjustment procedure must be repeated.

## **TO LOAD THE FILM....**

The film roll can be loaded on the mandrel of the carriage from either end of the roll. When using tacky film, please verify that the inward tacky surface of the film is inward on the load.

1. Disconnect power (turn off power switch).
2. Put the roll of film on the mandrel and press down to insure penetration of spikes into the cardboard center of the film roll.
3. In the case of automatic machines, install the film cap on top of the roll to prevent upward movement.
4. Introduce the roping end of the film between the shafts of all rollers (as shown on the dwg.) and pull to pass it around all three rollers (pressure roller and both rubber rollers).
5. Pass the film between the two dancer (aluminium) rollers (in certain applications the film has to be passed around one or two additional position aluminium rollers).
6. When the film feeding is completed - turn the power switch ON
7. Peel off the first few winds of the film (multistretch will run due to displacement of the dancer roller) and fix the film end onto the load or into the clamp mechanism (if machine is fully automatic).

The system is now ready to begin the first wrapping cycle.  
Proceed to page titled **SYSTEM START UP**.



## **SYSTEM START-UP**

Notice: It is advisable to test-run the equipment with several pallet loads before make the attempt to wrap with film. Please position a worker at the EMERGENCY STOP push button.

Start up of the machine (system) may determine the need for the adjustment of:

- pallet sensor eyes (automatic systems only)
- load height stop photoswitch (on the carriage)
- conveyor acceleration/deceleration
- turntable speed & jog speed
- turntable speed acceleration/deceleration
- turntable home position (rotary tower home position)
- film tail treatment devices (automatic systems).

## **MACHINE WRAPPING TEST**

Before the test procedure adjust the wrapping cycle parameters i.e. top wraps, bottom wraps, height photocell on/off, film tension, carriage speed (those two parameters may be adjusted during the wrapping cycle).

When there is no photocell, verify the top limit switch position.

## **MACHINE MAINTENANCE**

### **REDUCER OIL CHANGE**

On the reducing transmission, after the first week all external cap screws and plugs should be checked for tightness. It is recommended to change the oil every six months or 25000 hours of operation, whichever ever comes first. When adding oil, the transmission should never be filled above the oil level mark indicated, because leakage and overheating may occur. Below is a list of the type of lubricant that should be used:

<b>Manufacturer</b>	<b>Lubricant</b>
American Oil CO.	American Cyl Oil no:196-L
Cities Service Oil Co.	Citgo Cyl.Oil 100-5
Gulf Oil Corp.	Gulf Senate 155
Mobil Oil Corp.	Mobil 600 W Suerr Cyl.Oil
Philips Oil Co.	Andes S 180
Texaco Inc.	624+650T Cyl.Oil
Shell Oil Co.	Velvata Oil J82
Union Oil Of Cal.	Red Line Worm Gear Lube 140

### **MOTOR MAINTENANCE**

An occasional inspection of the brushes should be made in order to establish a wear rate. Replacement brushes should be installed before old brushes wear to 9/16" long, measured on the long side. After replacing brushes run the motor near rated speed for at least 1/2 hour with no load to seat the new brushes.

Failure to properly seat the new brushes may cause commutator damage and rapid wear of the new brushes. If the commutator becomes rough, scored or out of shape, a competent motor shop should disassemble the motor and resurface the commutator. With every third brush change, have a competent motor shop resurface the commutator and blow the carbon dust out of the motor.

## **CHAIN MAINTENANCE**

To clean the chain, wipe it with an oily cloth every month. If the environment is very dusty or damp, it may be necessary to clean it more often.

With time the chain will tend to stretch. A loose elevator and turntable (rotary arm) chain should be tightened at the chain tensioner, or by moving the reducer on the mounting plate.

## **CAM FOLLOWER MAINTENANCE**

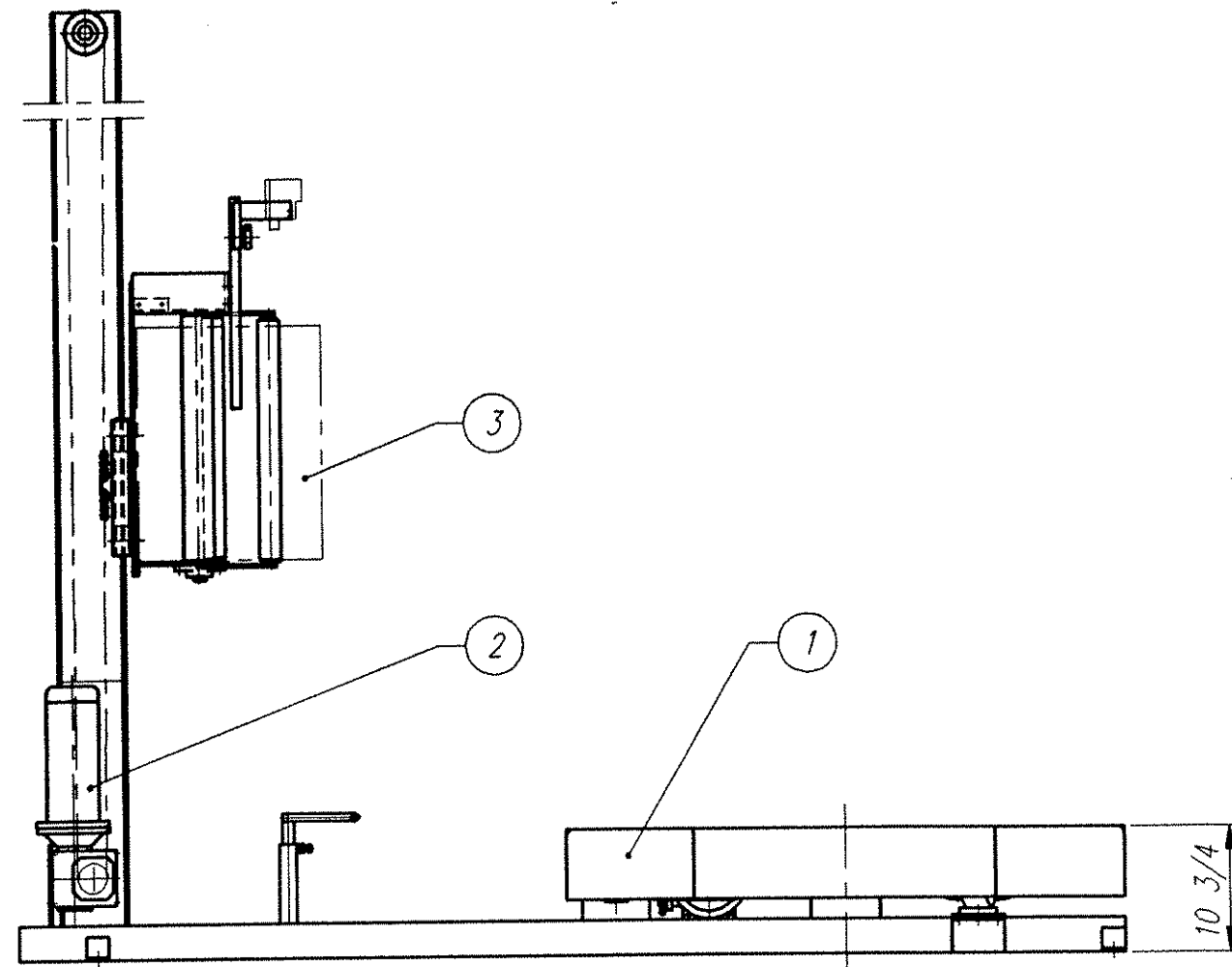
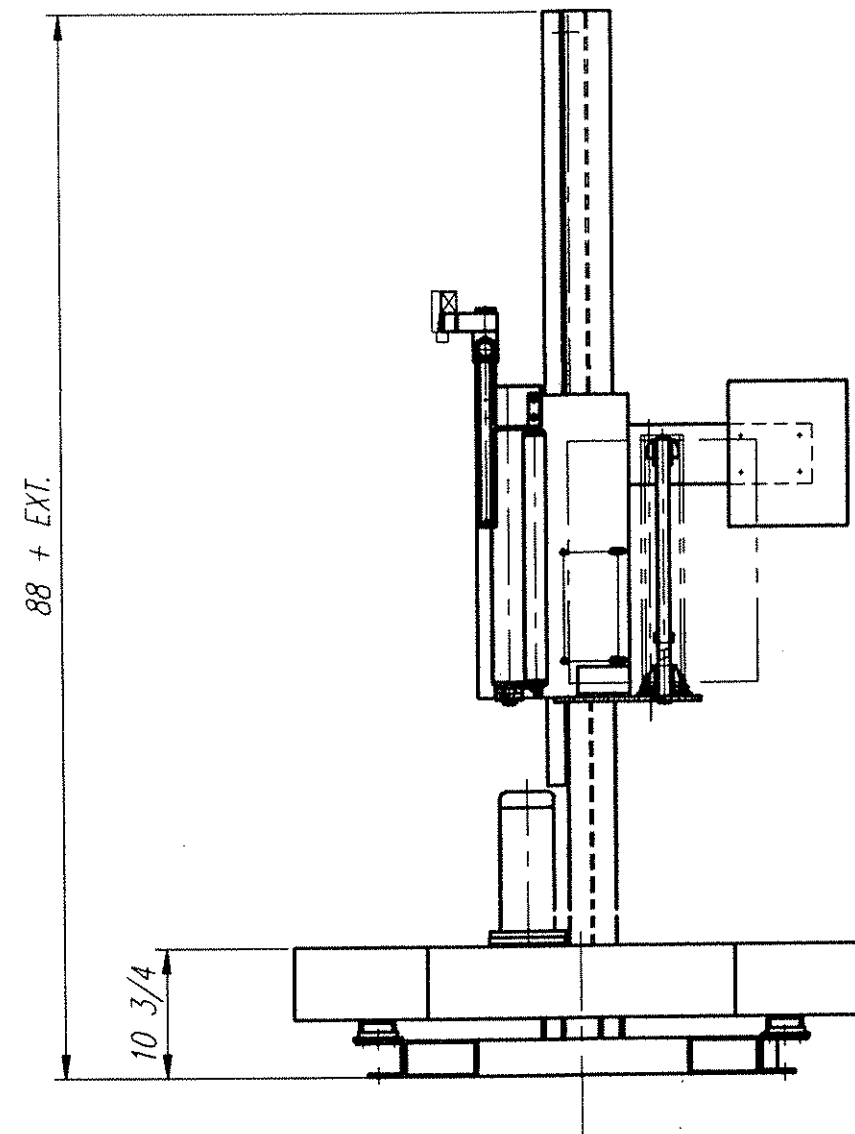
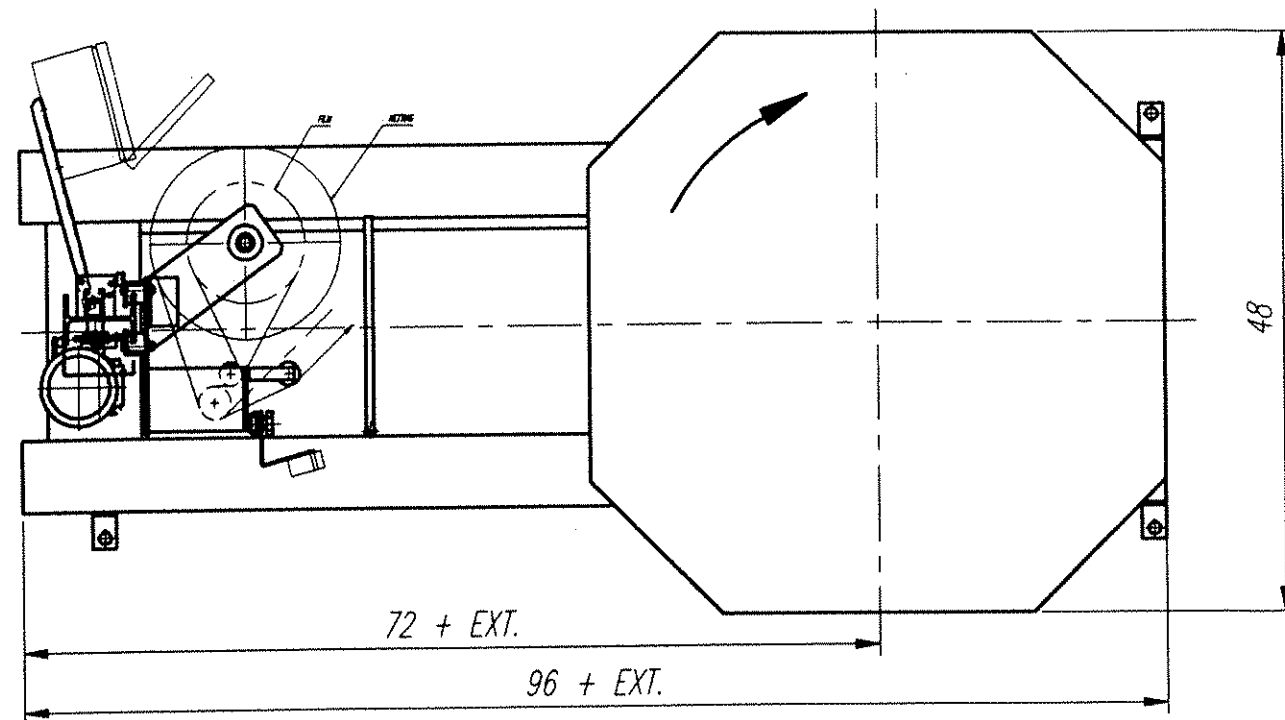
The cam followers behind the carriage have deep grease pockets and do not need frequent relubrication. The portion of the tower on which the cam followers run, should be cleaned and regreased every 300 hours of operation. If the machine operates in a dusty or corrosive environment the tower should be relubricated more often.

**SEMI-AUTOMATIC  
STANDARD ASSEMBLY  
PART LIST**

**Note :**

**\* Quantity listed in order of part number**

**\*\* The names given to the parts are generic**



TOTAL WEIGHT: ~ 865 (880) Lbs

3	30" ECONOSTRETCH - ASSEMBLY	D	412138	1	88.0
3	20" ECONOSTRETCH - ASSEMBLY	C	409619	1	73.0
2	TOWER - W6 x 12 (ASSEMBLY)	C	414142	1	91.7
1	H78/12 BASE ASSEMBLY W/"DURA-GLIDE" CASTERS	C	414145	1	696.7
No.	DESCRIPTION	DWG SIZE	PART No.	Q'ty	WEIGHT

REMARKS:

### H78/12 WRAPPER

**orion**  
PACKAGING INC.  
2270 INDUSTRIEL, LAVAL  
QUEBEC, CANADA, H7S 1P9  
TEL: (514) 667-9769

ASSEMBLY DWG:

LAYOUT

DATE:

NOV-18-1996

DRAWN BY:

M. W. SOBUCKI

CHECKED BY:

JOB No.:

STD

SCALE:

1 : 16

MACHINE TYPE:

H78/12

DRAWING SIZE:

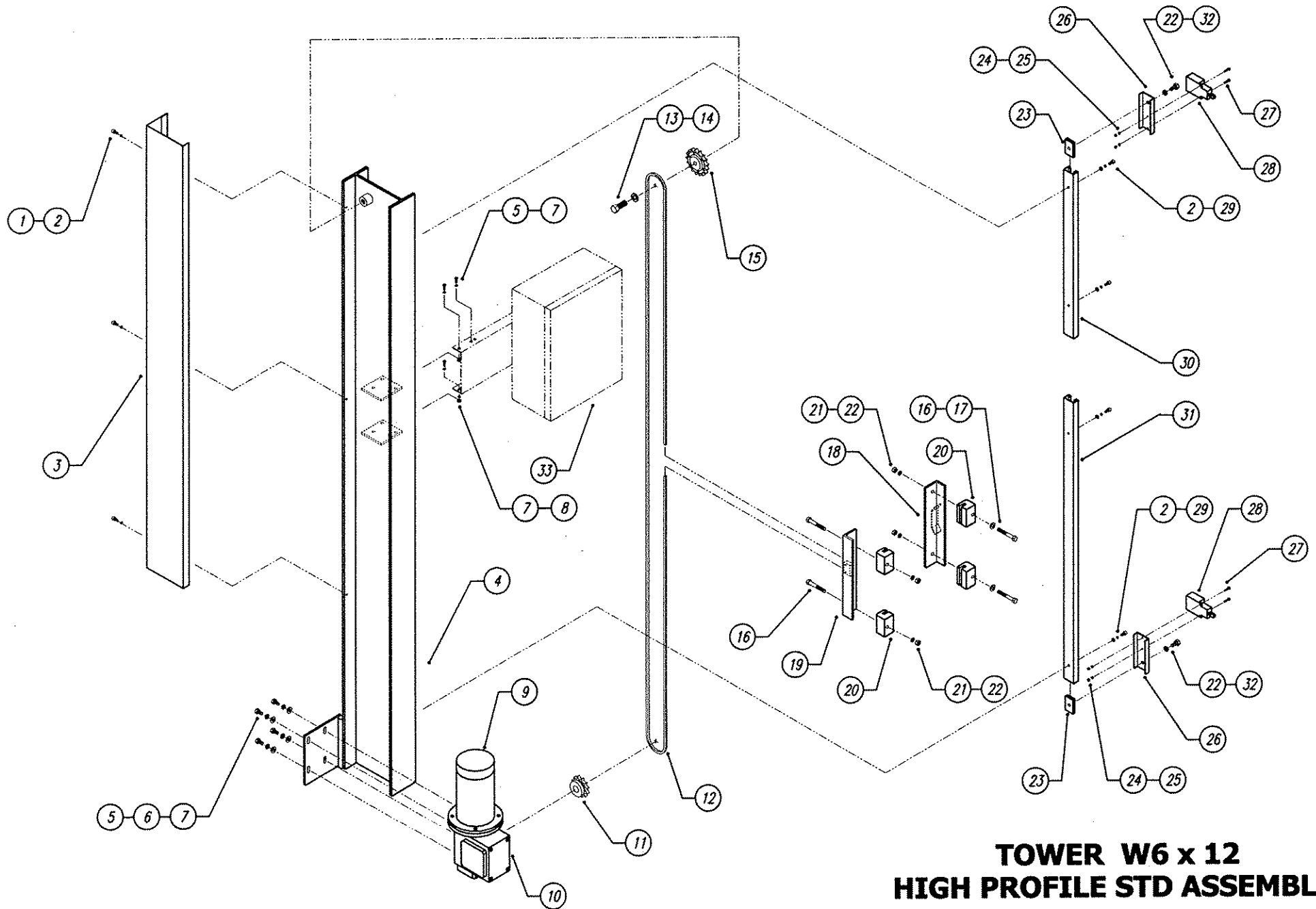
B

DRAWING No.:

414144

REQ'D - 1 Pc

ORG



# **TOWER W6 x 12 HIGH PROFILE STD ASSEMBLY**

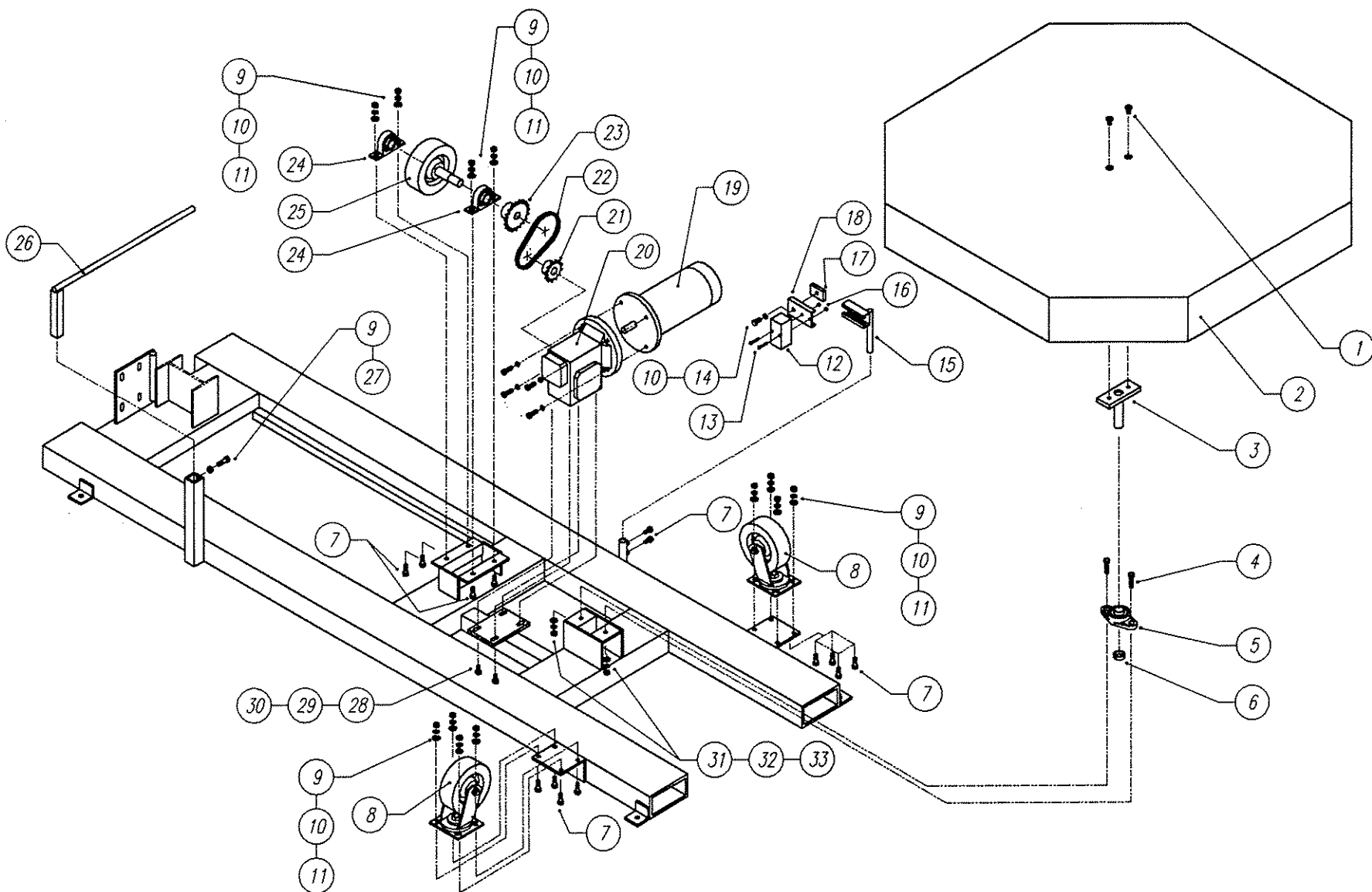
UPDATED JAN-12-98

# 418486

**TOWER W6 x 12 HIGH PROFILE  
ASSEMBLY PART LIST**

Dwg. # 418486    updated Jan-11-98

NO	PART #	DESCRIPTION	QTY
1.	012049	PAN PHILL	3
2.	011393	SPRING WASHER	7
3.	414437	TOWER CHAIN GUARD	1
4.	415835	TOWER W6 x 12	1
5.	010316	HEX HEAD SCREW	8
6.	012724	SPRING WASHER	4
7.	012725	FLAT WASHER	8
8.	012751	HEX NUT	4
9.	010036	EL. MOTOR	1
10.	010344	REDUCER	1
11.	010094	SPROCKET	1
12.	010009	CHAIN	1
13.	010329	HEX HEAD SCREW	1
14.	012721	SPRING WASHER	1
15.	010008	IDLER SPROCKET	1
16.	010401	HEX HEAD SCREW	4
17.	010948	FLAT WASHER	4
18.	408190	SLIDE BLOCK ALIGNING ANGLE	1
19.	409045	FILM CARRIAGE ATTACHMENT	1
20.	409341	SLIDE BLOCK	4
21.	011128	HEX NUT	4
22.	011390	SPRING WASHER	6
23.	220518	CHANNEL GUIDE	2
24.	012726	HEX NUT	4
25.	012743	SPRING WASHER	4
26.	260816	LIMIT SWITCH HOLDER	2
27.	012690	PAN PHILL	4
28.		LIMIT SWITCH	2
29.	010257	SOCKET HEAD CAP SCREW	4
30.	413971	LIMIT SWITCH TOP CHANNEL	1
31.	413972	LIMIT SWITCH BOTTOM CHANNEL	1
32.	010293	HEX HEAD SCREW	2
33.		ELECTRICAL PANEL & BRACKET	1



# **HIGH PROFILE H78/11 BASE ASS'Y**

UPDATED OCT-04-96

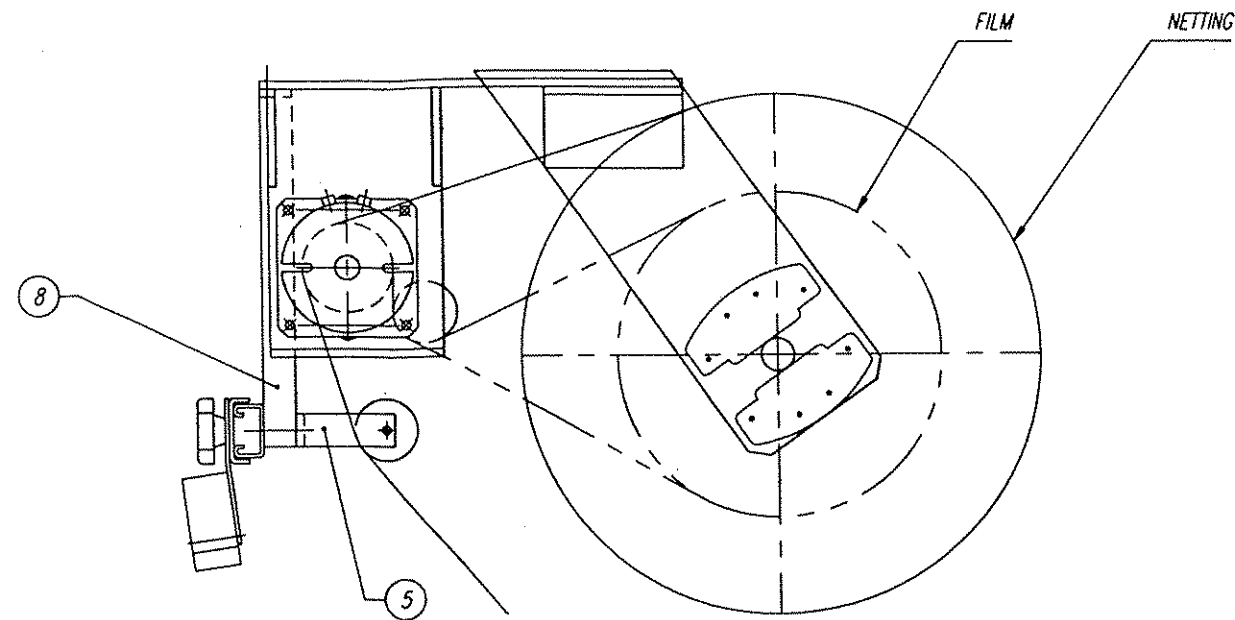
# 413677



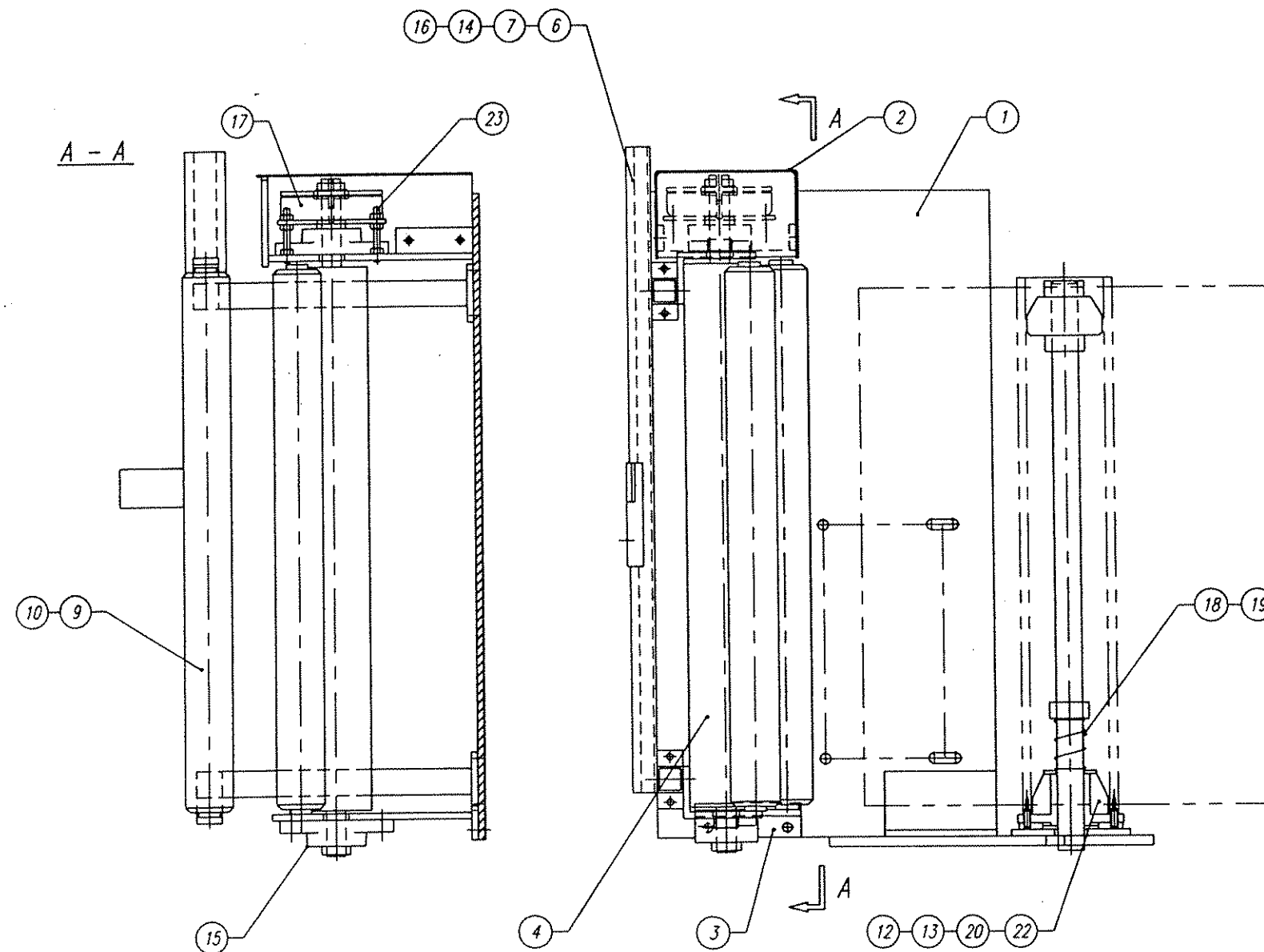
**HIGH PROFILE H78/11 BASE ASS'Y - PART LIST**

DWG # 413677 updated Oct-04-96

NO.	PART #	DESCRIPTION	QTY
1.	010278	FLAT SOCKET CAP SCREW	2
2.	409069	TURNTABLE 48", OCTAGONAL	1
3.	404267	TURNTABLE SHAFT	1
4.	010287	HEX HEAD SCREW	2
5.	010244	2-BOLT FLANGED BEARING	1
6.	010052	COLLAR	1
7.	010293	HEX HEAD SCREW	14
8.	010876	SWIVEL CASTER	2
9.	011128	HEX NUT	17
10.	011390	SPRING WASHER	16
11.	010948	FLAT WASHER	16
12.		PROXIMITY SWITCH	1
13.	012858	PAN PHILL SCREW	2
14.	012274	HEX HEAD SCREW	1
15.	401465	PROXIMITY SWITCH CHANNEL	1
16.	012726	HEX NUT	2
17.	220518	CHANNEL GUIDE	1
18.	260817	PROXIMITY SWITCH HOLDER	1
19.	010036	EL. MOTOR	1
20.	010093	REDUCER	1
21.	010094	SPROCKET	1
22.	010009	CHAIN	1
23.	010235	SPROCKET	1
24.	012101	CAST IRON BEARING	2
25.	402542	DRIVE SHAFT W/PHENOLIC WHEEL	1
26.	403521	ROPING BAR	1
27.	012406	HEX HEAD SCREW	5
28.	012723	HEX HEAD SCREW	4
29.	012724	SPRING WASHER	4
30.	012672	FLAT WASHER	4
31.	011266	HEX NUT	2
32.	012583	SPRING WASHER	2
33.	012584	FLAT WASHER	2




ITEM 6, 7, 14, 16 USE WHEN LOAD HEIGHT PHOTOCELL ORDERED

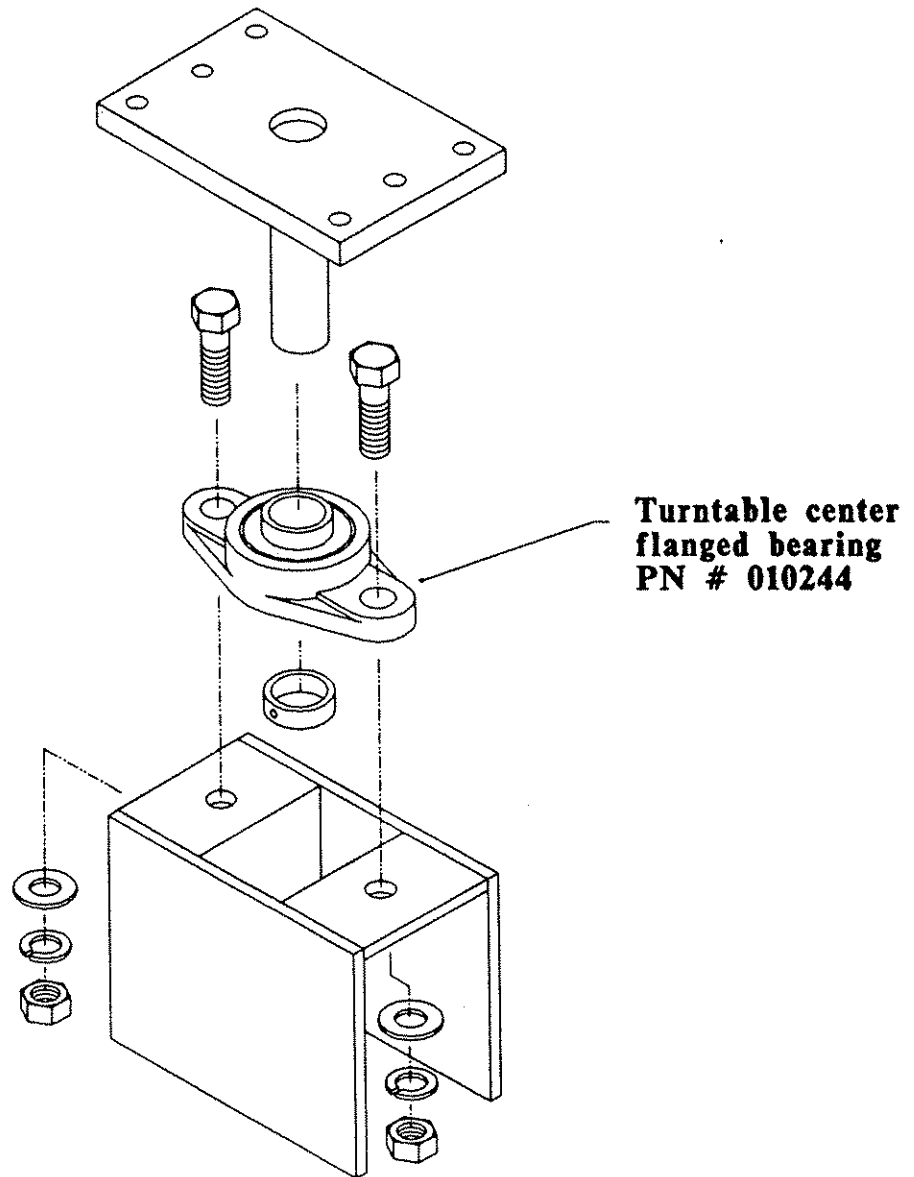


23	THREADED ROD		013385	4		
22	FLAT WASHER		010199	1		
21	SELF-SEATING RETAINING RING		013860	1		
20	STUD		010885	2		
19	COMPRESSION SPRING		010891	1		
18	COLLAR		010052	2		
17	BRAKE		010251	1		
16	BLACK KNOB		010092	1		
15	FLANGE BEARING		010042	2		
14	CHANNEL GUIDE	A	220518	1		
13	BRAKE DISK	A	402795	1		
12	BOTTOM SPOOL	A	240101	1		
11	TOP SPOOL	A	240100	1		
10	ALU. IDLE ROLLER 1.9 - 20	A	402789	2		
9	IDLE ROLLER SHAFT - 20	A	407815	2		
8	ROLLER SUPPORT	A	416440	2		
7	PHOTOCELL CHANNEL - 20"	A	416442	1		
6	PHOTOCELL BRACKET	A	416824	1		
5	ROLLER BRACKET	A	416441	2		
4	ECONOSTRETCH RUBBER ROLLER - 20"	B	409625	1		
3	BOTTOM ROLLER BRACKET	B	409624	1		
2	COVER	A	409623	1		
1	20" ECONOSTRETCH BACK PLATE	B	409620	1		
No.	WEIGHT	DESCRIPTION	DWG. SIZE	PART No.	Q'ty	WEIGHT

REMARKS:

REMARKS:

20" ECONOSTRETCH ASSEMBLY					
 ORION PACKAGING INC. 2270 INDUSTRIEL, LAVAL QUEBEC, CANADA, H7S 1P9 TEL: (514) 667-9769	DATE:	JULY-11-1997	SCALE:	1 : 4	
	DRAWN BY:	ACHILLES N.	MACHINE TYPE:	H78/12	
	CHECKED BY:		DRAWING SIZE:	C	
	ASSEMBLY DWG.:	LAYOUT	JOB No.:	STD	DRAWING No.: 416825



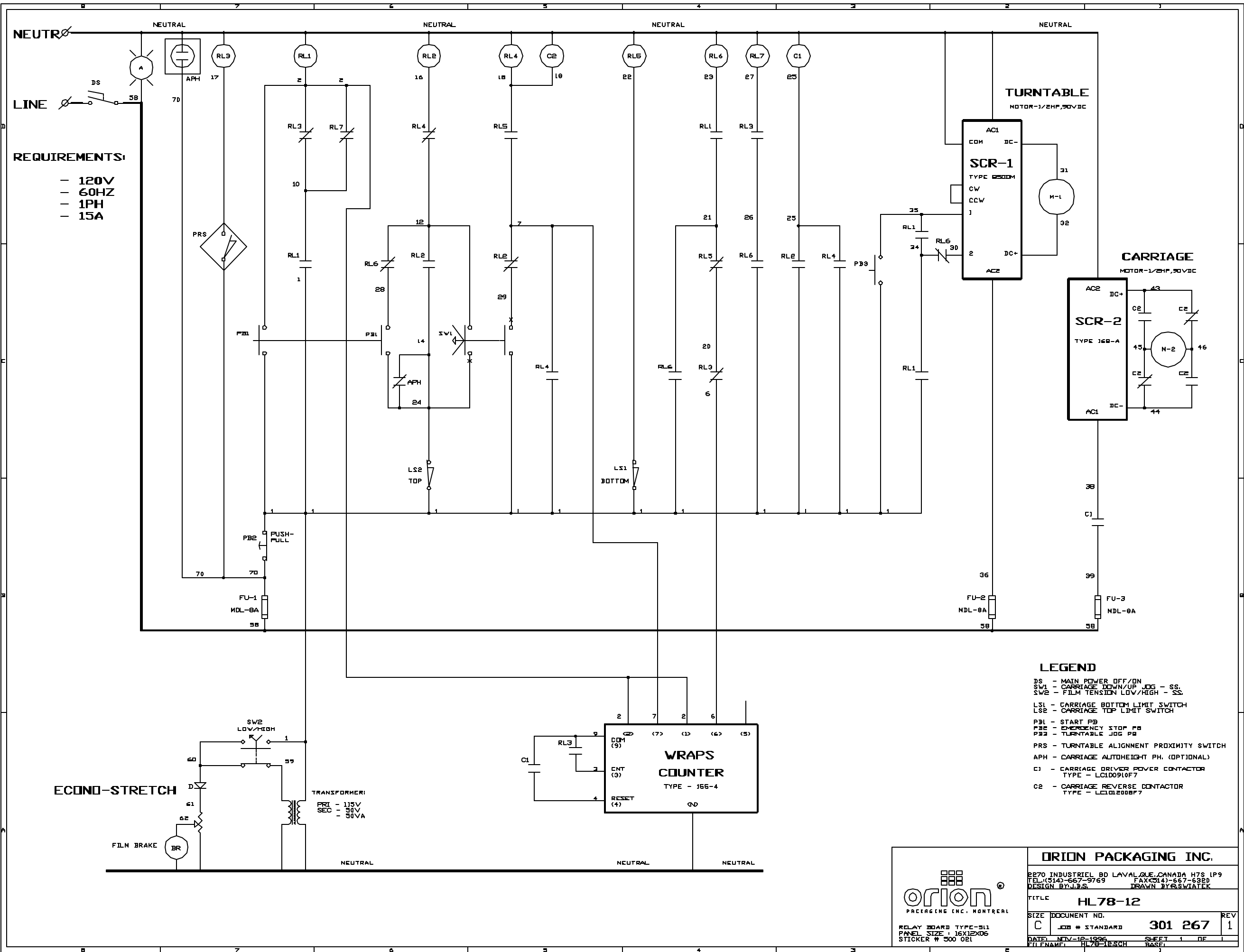
## **WARNING !**

When replacing turntable center flanged bearing (# 010244), please make sure that both bolts are placed head-up as shown on the drawing above.

Incorrect installation may affect clear rotation and cause damage to the machine.


**FOR HIGH PROFILE H-66, H-77 & H-88  
BASE ASSEMBLY**

# APPENDIX



LEGEND

- DS - MAIN POWER OFF/ON
- SW1 - CARRIAGE DOWN/UP JOG - SS.
- SW2 - FILM TENSION LOW/HIGH - SS.
- LS1 - CARRIAGE BOTTOM LIMIT SWITCH
- LS2 - CARRIAGE TOP LIMIT SWITCH
- P31 - START PB
- P32 - EMERGENCY STOP PB
- P33 - TURNABLE JOG PB
- PRS - TURNABLE ALIGNMENT PROXIMITY SWITCH
- APH - CARRIAGE AUTOHEIGHT PH. (OPTIONAL)
- C1 - CARRIAGE DRIVER POWER CONTACTOR  
TYPE - LC1D0910F7
- C2 - CARRIAGE REVERSE CONTACTOR  
TYPE - LC1D0200F7



ORION  
PACKAGING INC. MONTREAL

RELAY BOARD TYPE-S11  
PANEL SIZE: 16X12X06  
STICKER # 300 081

ORION PACKAGING INC.		
2270 INDUSTRIEL RD LAVAL QUE. CANADA H7S 1P9		
TEL: (514) 667-9769 FAX: (514) 667-6980		
DESIGN BY: J.B.S. DRAWN BY: S.W.I.F.K.		
TITLE HL78-12		
SIZE C	DOCUMENT NO. 301 267	REV 1
DATE: NOV-10-1996		SHEET 1 OF 1
FILE NAME: HL78-12SCH		BASEL

# **TURNTABLE & TOWER MOTOR CONTROL BOARD ADJUSTMENTS**

## **66 & 55 SERIES EQUIPMENT (850M & 850DM Board)**

### **INTRODUCTION**

The 850M and 850 DM Motor Control Boards are DC/SCR drives that are used in 66 & 55 series Orion stretch wrapping equipment. The following calibration instructions apply to all 66 & 55 series turntable and rotary tower type machinery, but it will be important to note specific reference to your particular Orion model for best calibration results.

The 850M and 850DM boards feature two selectable pre-set speeds (1 & 2), and four potentiometers (marked 1,2,A and D).

The instructions are in the suggested order of adjustment, and intended to be made after installation of the board in the control enclosure. Please refer to the attached sketch of the board for identification of the adjustment points.

### **INSTALLATION**

This unit is equipped with an aluminum chassis, which serves as a heatsink. This should be oriented with the printed circuit board in a vertical plane for optimum convection cooling.

Connectors are to .250" quick-disconnect terminals. Standard units require 120 VAC supply. AC line attaches to terminals **AC1**, **AC2**. Motor Armature attaches to terminals **DC+**, **DC-**. The standard unit is suitable for permanent magnet shunt style DC motors with 90 V armature rating.

## ADJUSTMENTS

**Acceleration:** (RV3) The pot marked **A** is the control for the acceleration or electronic soft start feature.

For an initial setting, turn the **A** pot fully counter-clockwise (CCW) until a faint “clicking” sound is heard, then approximately 2 turns (or revolutions) clockwise (CW). CW adjustment of this potentiometer softens the start and lengthens the time required for the turntable/tower to reach its preset speed.

**Speed Control:** (RV1) The pot marked **1** controls the turntable/tower jog speed<sub>1</sub>.

Simply activate the turntable/tower jog function, adjusting the jog speed (pot 1) as the turntable/tower rotates. This should be set for approximately 2 to 3 RPM. Please note that this setting should be made with a load on the turntable (turntable type models only). A CW turn increases the jog speed, while CCW decreases jog speed.

**Speed Control:** (RV2) The pot marked **2** is the control for the high speed<sub>2</sub> for the turntable/tower during the wrap cycle once acceleration is complete.

This speed can be as high as 12 RPM. However, you should note that if it is set too high, you may see chopping of the current to the turntable/tower drive motor which will cause pulsating, half-speed operation of the turntable/tower drive itself. If this is seen, please decrease the setting of pot **2**, until it is no longer in effect.

For best calibration results, it is recommended that you make this adjustment while the machine is in cycle. After starting a wrap cycle, set the film carriage speed control to the “0” (minimum) position. This will prevent the film carriage from rising and completing its cycle. Then simply adjust the high speed (pot **2**) as the turntable/tower rotates. A CW turn increases speed, a CCW turn decreases speed.

---

- 1** Speed Control 1 = Turntable/Tower Jog Speed  
Selected by a 120 VAC signal applied from terminal (1) to (C)
- 2** Speed Control 2 = Turntable/Tower High Speed  
Selected by a 120 VAC signal applied from terminal (2) to (C)

**Deceleration:** (RV4) The pot marked **D** is the deceleration control. Functionally, it is the opposite of acceleration, except that it is a more critical setting, in that our machine logic requires that we decelerate from speed 2 to speed 1 during the course of the final revolution of the turntable/tower before shutoff.

For an initial setting, start with the **D** pot set fully CCW. Then, cycling the machine; observe the transition to jog speed at the end of the cycle, prior to the stop of the turntable/tower at the home position. Gradually increase the **D** pot setting (CW) until the turntable/tower only jogs approximately 1/8 to 1/4 revolution before reaching home position. CW adjustment of this potentiometer quickens the stop and shortens the deceleration time required for the turntable/tower to settle to its preset jog speed. CCW softens the stop and lengthens the time required for the turntable/tower to settle to its preset jog speed.

Thus, the deceleration control is important in that if the deceleration time is too short, we will prematurely reach jog speed and jog an excessive amount of time to the home position before shutoff.

Conversely, if the deceleration time is set too long, the turntable/tower will not settle to the jog speed and thus will be going too fast to align properly and the momentum will take the turntable/tower beyond the start position. As you can imagine, any time the wrap speed is changed, you will need to make a corresponding change in the setting of the pot marked **D** (for deceleration).

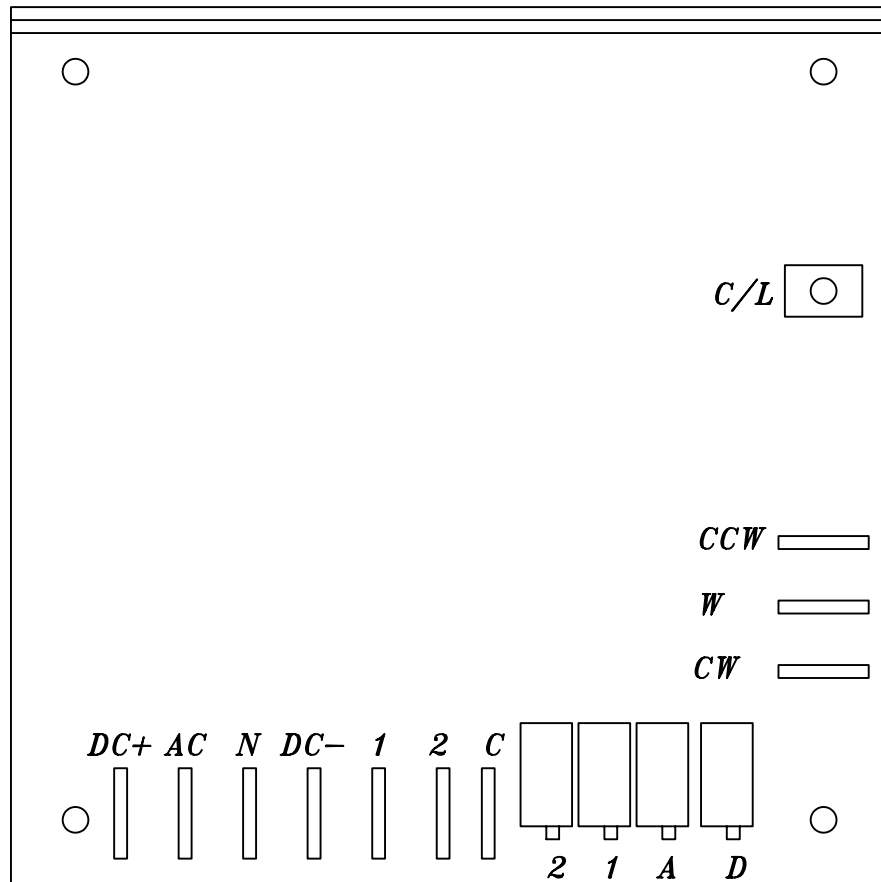
**Note:** The 850DM requires a jumper from the **W** pin to the **CW** pin for speed 2 to operate.

## **TROUBLE SHOOTING & REPAIR**

In most cases, repair will require parts replacement. If user intends to, and is equipped to perform repairs, spare parts are available from Orion Parts & Service.

Damage is usually visually evident on the 850M board. Replacing the obviously damaged board frequently restores operation. However, if damage is not evidently visible, swapping boards will determine if the board is at fault.





*DC+:* ARMATURE CONTROL.

*AC:* AC INPUT – LINE.

*N:* AC INPUT – NEUTRAL.

*DC-:* ARMATURE CONTROL.

*1:* CONTROL – LINE. JOG SPEED

*2:* CONTROL – LINE. WRAP SPEED

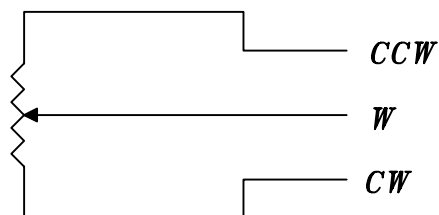
*C:* CONTROL – COMMON.  
(REQUIRES A JUMPER TO "N")

*MAX:* MOTOR SPEED ADJUSTMENT.

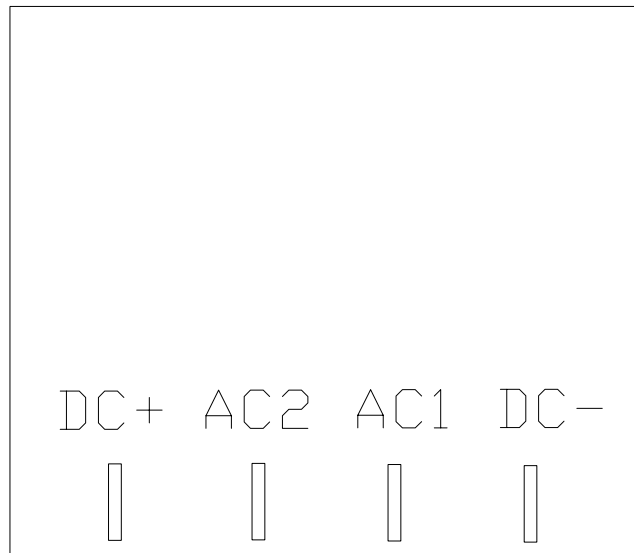
*ACC:* ACCELERATION ADJUSTMENT.

*C/L:* CURRENT LIMITER.  
(FACTORY SET)

*NOTE:* WHERE A REMOTE POT IS  
NOT USED (CONVEYOR)  
"W" & "CW" ARE SHORTED.



**850DM TWO SPEED 120VAC/90VDC  
MOTOR CONTROL BOARD**



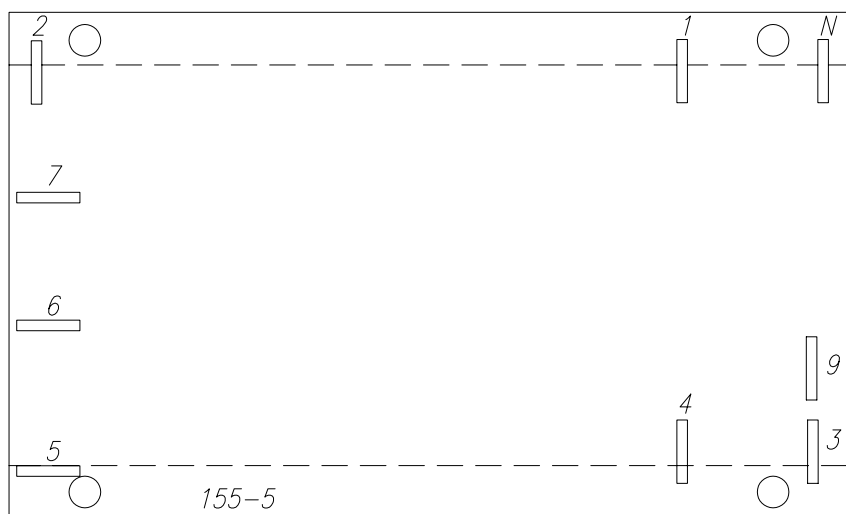
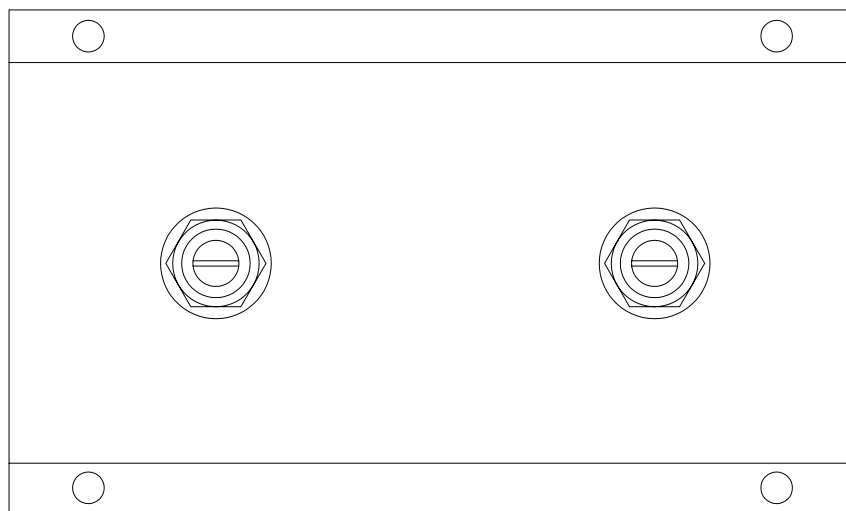
DC - OUT

DC + OUT

AC2 IN

AC1 IN ( NEUTRAL )

168-A   CARRIAGE UP/DN  
SINGLE   SPEED   BOARD



- 1: AC INPUT
- 2: AC INPUT
- 3: COUNT
- 4: RESET
- 5: OUTPUT PULSE AFTER 1-ST COUNT
- 6: OUTPUT T/W
- 7: OUTPUT B/W
- 8: N/A
- 9: COMMON
- N: NEUTRAL

155-5  
COUNTER BOARD