

## Lanyard Installation

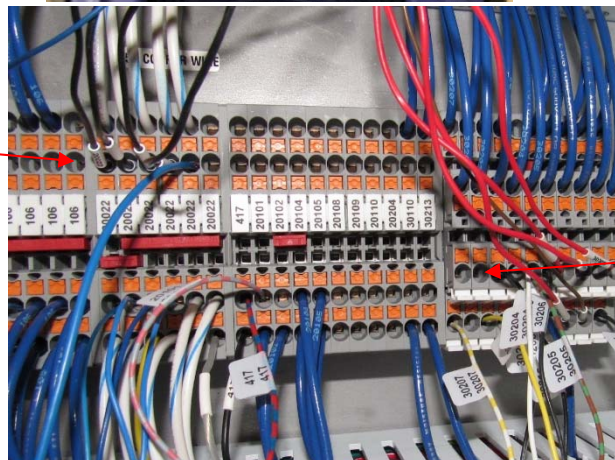
This bulletin is to inform distributors and end users of the proper wiring connections for Flex series machines with hanging lanyards.

1. Unplug machine power prior to wiring.
2. To wire in the lanyard, you will need a minimum two conductor cable. Example: black and white wire.
3. Connect the black wire from the terminal strip 24-volt DC 106 to the lanyard housing in illustration 1. Use the NO contact opposite of the white wire connection.
4. Terminate the white wire on 30215 to the NO contact opposite of the black wire in the previous step.
5. Install the lanyard cover and close the panel door.
6. Plug in the machine.
7. To test, pull the lanyard with Control Power present. When the lanyard is pulled, input 15 is triggered and starts the machine cycle.

Illustration 1  
Lanyard



Illustration 2  
Panel



Black Wire  
24 Volt DC

White Wire  
Terminate  
to 30215

Illustration 3 Electrical Schematic

